

INSTRUMENT APPROACH CHART - ICAO

AERODROME ELEV 2829'
 HEIGHTS RELATED TO
 THR RWY 05 - ELEV 2825'

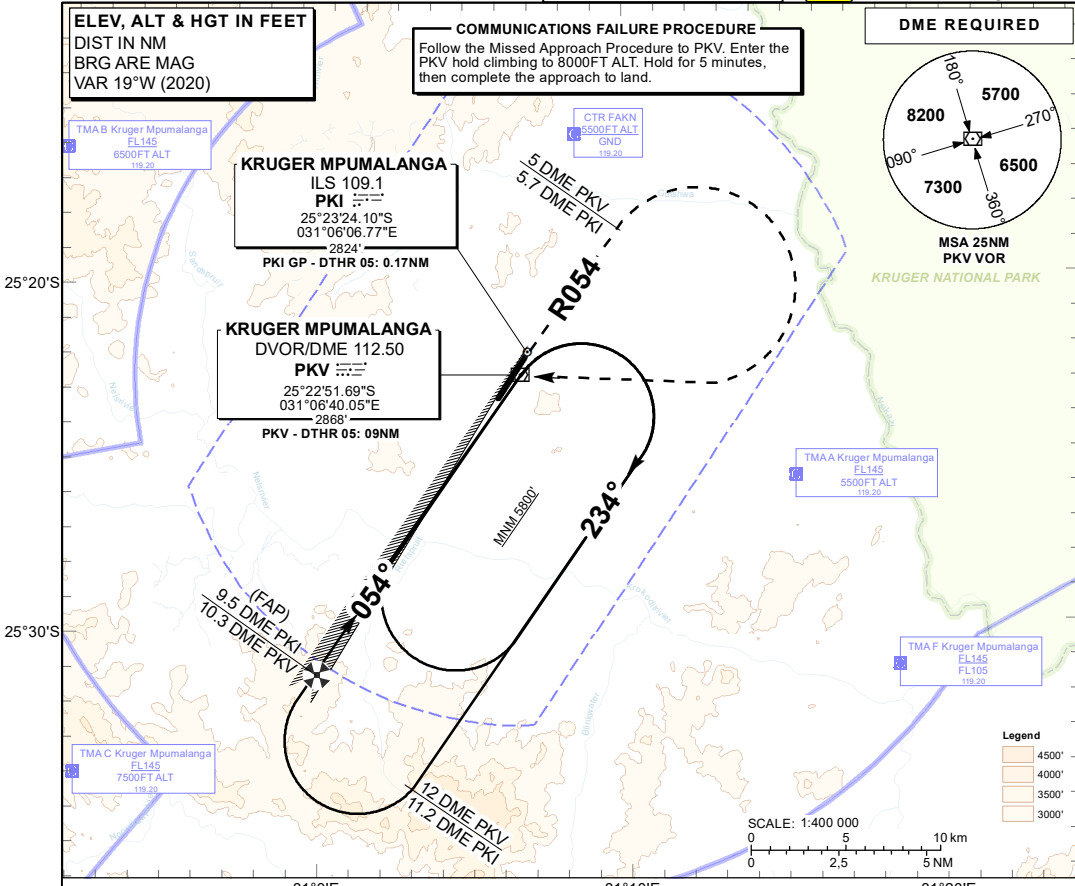
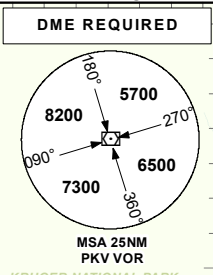
KRUGER APP: 119.20
 TWR: 119.20
 LOWVLD: 119.00
 129.40

KRUGER MPUMALANGA INTL ILS Z RWY 05 CAT A - D



ELEV, ALT & HGT IN FEET
 DIST IN NM
 BRG ARE MAG
 VAR 19°W (2020)

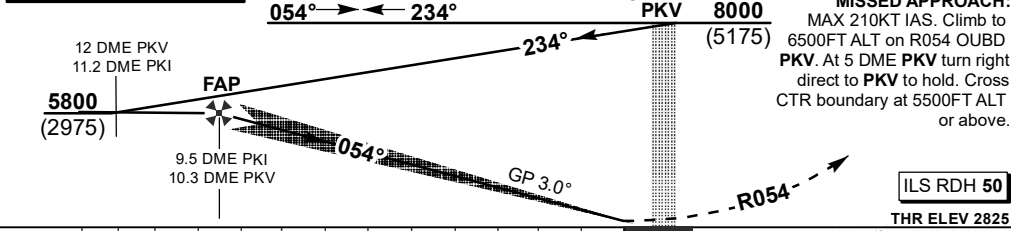
COMMUNICATIONS FAILURE PROCEDURE
 Follow the Missed Approach Procedure to PKV. Enter the PKV hold climbing to 8000FT ALT. Hold for 5 minutes, then complete the approach to land.



PKI ILS/DME	9.5	9	8	7	6	5	4	3	2
ADVISORY ALT(HGT)	5800 (2975)	5650 (2825)	5340 (2515)	5020 (2195)	4710 (1885)	4400 (1575)	4080 (1255)	3770 (945)	3460 (635)

TRANSITION ALT 9000
TRANSITION LEVEL ATC

INA ALT: 8000 or higher MSA



MISSED APPROACH:
 MAX 210KT IAS. Climb to 6500FT ALT on R054 OUBD PKV. At 5 DME PKV turn right direct to PKV to hold. Cross CTR boundary at 5500FT ALT or above.

ILS RDH 50

THR ELEV 2825 NM to/from THR RWY 05

OCA/H		A	B	C	D	GS	KT	80	100	120	140	160
ILS/DME CAT I	With 2.5% Missed APCH Gradient	3770 (945)	3770 (945)	3760 (935)	3760 (935)	9.5 DME PKI to THR	M:S	7:00	5:36	4:40	4:00	3:30
	With 3.0% Missed APCH Gradient	3420 (595)	3420 (595)	3410 (585)	3410 (585)	Rate of descent	FPM	417	522	626	730	835
	With 3.6% Missed APCH Gradient	3025 (200)	3025 (200)	3025 (200)	3039 (214)	NOTE: 1. Descend in the hold to 8000FT ALT. 2. Increased Missed APCH climb gradient due to crossing ALT at CTR boundary.						
Circling: AD ELEV		3980(1151)	3980(1151)	4080(1251)	4080(1251)							

CHANGE: INBD HDG. Plan/Profile view